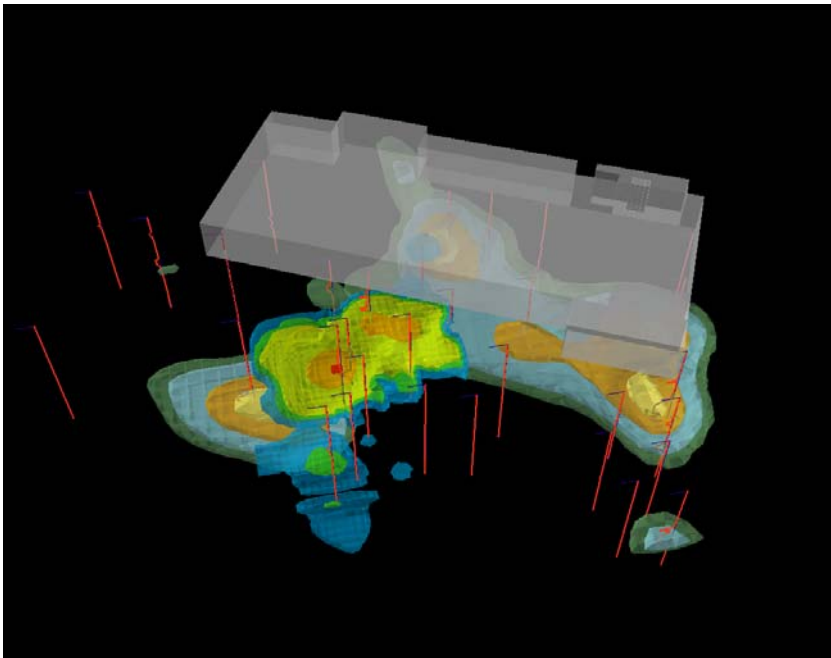


TRIAD APPROACH

S₂C₂ has been a leader in developing on-site characterization methodologies and dynamic work strategies integral to the Triad approach. S₂C₂ believes that to execute an efficient TRIAD process it is necessary to maximize the amount of data collected and analyzed every day. Many data points collected vertically at multiple depths and horizontally throughout the critically impacted area provides a complete description of the contamination and leaves all parties involved with a confident framework to establish risk based and /or remedial decisions. S₂C₂ has all the tools and experience necessary to complete a successful Triad program including direct-sensing probes, mobile laboratories, direct-push units, and data management and visualization capabilities.



Advantages of the Triad Approach

- Incorporates a higher density of data minimizing error associated with sampling bias.
- Incorporates dynamic work strategies and real-time data measurements
- Radically compresses the time to perform Remedial Investigations
- Allows for stakeholder interaction to focus pertinent remedial objectives.

S₂C₂ is committed to working with our clients through all project phases - from the initial proposal, through field implementation, to project completion. We have the tools and personnel to complete your Triad project.

For more information, contact Steve Gelb at 908-253-3200, x11.

