

# Brownfields Redevelopment Site – Passaic, New Jersey

S<sub>2</sub>C<sub>2</sub> Inc. 5 Johnson Drive, Suite 12 • Raritan, NJ 08869 • Phone 908-253-3200 • Fax 908-253-9797

## **Technology Used**

Triad  
Direct Push Unit  
Direct-Sensing: Membrane  
Interface Probe (MIP)  
EQuIS Database  
3D modeling  
GIS/GPS

## **Analysis Performed**

VOCs by GC/MS (24 hr. TAT)

## **Matrix of Concern**

Soil  
Groundwater

## **Primary Contaminants of Concern**

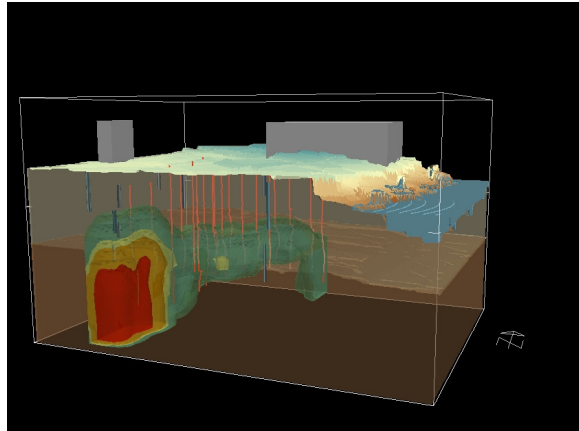
Chlorinated Compounds

## **Period of Work**

Ongoing investigation  
Initial MIP investigation 3 days

## **Summary**

MIP Locations: 19  
MIP Footage: 555'



## **Project Summary**

### **Site Description**

Brownfields redevelopment site located in Passaic, New Jersey

### **Project Description**

Previous investigations at the site indicated a shallow chlorinated solvent plume with a suspected source located above a confining unit. Prior to initiating the MIP investigation a geophysical contractor performed a penetrating resistivity survey to map chlorinated impacts in the subsurface. S2C2 was tasked with completing the delineation of the chlorinated solvent plume as well as to confirm results of the geophysical survey. The MIP system was utilized to complete this task. Upon completion of the MIP survey confirmation samples were collected based upon the MIP data.

### **Project Results**

Based upon the MIP results, it was determined the geophysical survey did not accurately determine the location of the chlorinated solvent plume. Upon confirmation of this, we fully delineated the plume and determined that the groundwater impacts were located within and not on a silt layer at approximately 25 feet below ground surface. Confirmation sampling was completed based on the MIP logs at targeted depth intervals. All data collected during this investigation was wirelessly sent to our office where MIP logs and models were generated and sent to pertinent stakeholders.

**S<sub>2</sub>C<sub>2</sub> inc.**

Streamlined Site Characterization & Closure