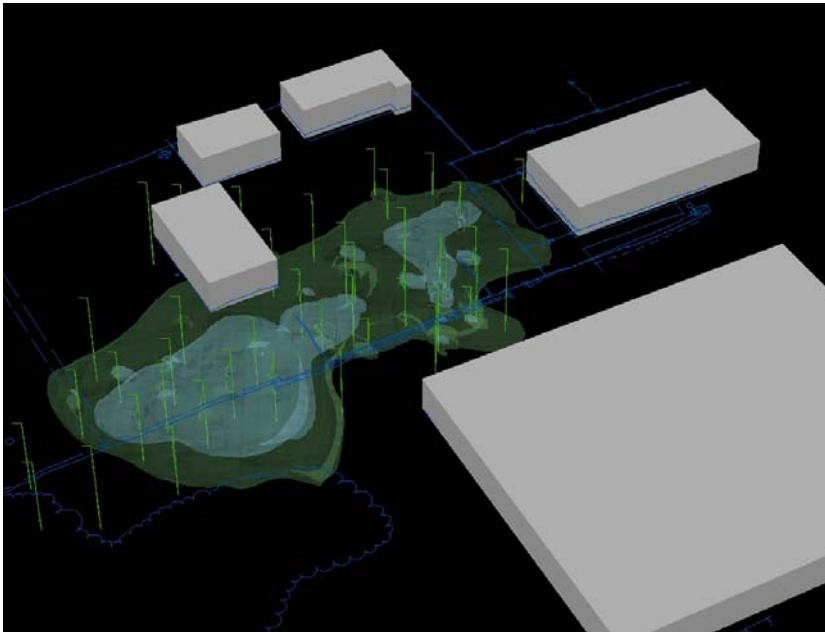


FUEL FLUORESCENCE DETECTOR SERVICES

S₂C₂ is a leader in providing innovative Direct-Push/Direct-Sensing Services . With the recent addition of a Fuel Fluorescent Detector (FFD), we now have the capability of rapidly characterizing free-phase petroleum hydrocarbon plumes as well as free-phase coal tar impacts. The FFD detects the fluorescence produced by aromatic hydrocarbons when excited by an ultraviolet (UV) light source. Pushed with one of our Geoprobe units, the FFD significantly reduces the time needed to detect and delineate the extent of hydrocarbon impacts.

Model of Diesel Impacts from FFD data



Advantages of FFD

- Obtain rapid free-phase hydrocarbon impacts (Detection limits as low as 100 ppm TPH)
- Two filters allow for differentiation between different fuel types
- CPT data collected in conjunction with FFD data giving detailed geologic information
- Limited soil sampling required to confirm log response
- No drill cuttings
- Allows for detailed modeling and volume estimates of free-phase plumes
- Decreases remedial design uncertainties

All of S₂C₂'s direct-push units are capable of pushing the MIP[®], FFD or Conductivity probes. Whether it requires a track mounted Geoprobe[®] 6620DT, a truck mounted Geoprobe[®] 6600 or 5410, or an ATV Bobcat[®] with Geoprobe[®], S₂C₂ has the experience and tools to finish the job on-time in a variety of site conditions.

For more information, contact Jason Ruf at 908-253-3200, x18.